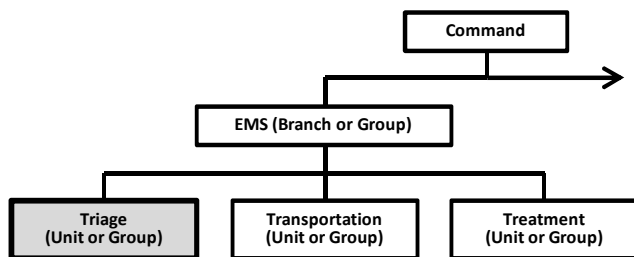


## Mass Casualty Incident Operational Checklist

### Triage (May be set up as Unit or a Group)



Location:	
Date:	Box #:
Alarm Time:	Arrival:
Last Pt. Trans:	Cleared:
Triage Leader:	

Checklist Item	✓	Time	Location / Comments / Who
Ensure SMART Tag system Initiated			
Crew(s) Assigned to Triage			Crew(s) Assigned:
Request Additional Crews as Needed			
Initial Triage using START protocol			
Initial ESTIMATED Patient Count			Red:      Yellow:      Green:      Deceased:
Advise EMS Leader of Count			
Assign or Request Aide(s)			As Necessary
Request Additional Triage Supplies			As Needed
Ensure all Triage Crews using Log Sheets to track Patients			
Establish Controlled Exit Point			Location:
Evaluate need for decon			
Determine Patient Count Totals			Red:      Yellow:      Green:      Deceased:
Update EMS Leader with Count			
Ensure all Patients have a Triage Tag			
Keep EMS Leader Updated on Patient Count Totals			
Notify EMS Leader when All Patients are Triage			
Report to treatment area			

## Communications - radio freq

**To Hospital:** ☐ Phone ☐ Radio

By: ☐ IC ☐ EMS Leader ☐ Transportation Ofc.

**On Scene:** Incident Tactical:

EMS Branch:

Logs Section:

[illegible]