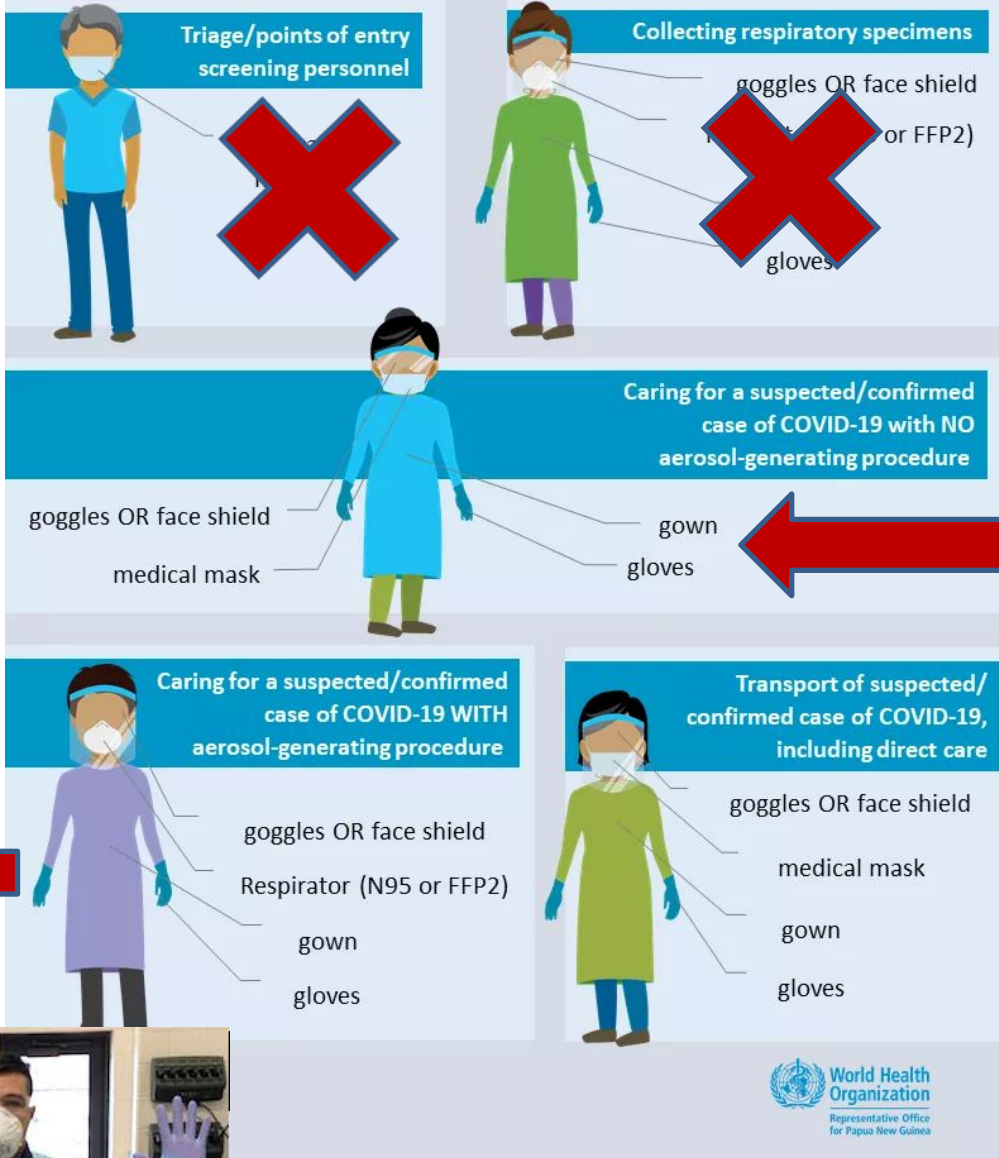


Coronavirus Disease 2019 (COVID-19)

FOR HEALTHCARE WORKERS

Personal Protective Equipment (PPE) According to Healthcare Activities

Remember Hand hygiene is always important. Clean hands before putting on, and after taking off, PPE.



ALL EMS patients with suspected lower respiratory illness



N95 mask on EMS used ONLY for suspected/known Covid-19 pts on whom aerosol-generating procedures are initiated: ~~None~~, ETI, cardiac arrest mgt.

NO N95 masks on pts or bystanders - apply procedural (surgical) mask on them

Mask/gloves alone NOT OK for EMS – face shields should be reused after cleaning

Safely doff (remove) gloves/gowns without self-contamination; dispose appropriately immediately after use

