

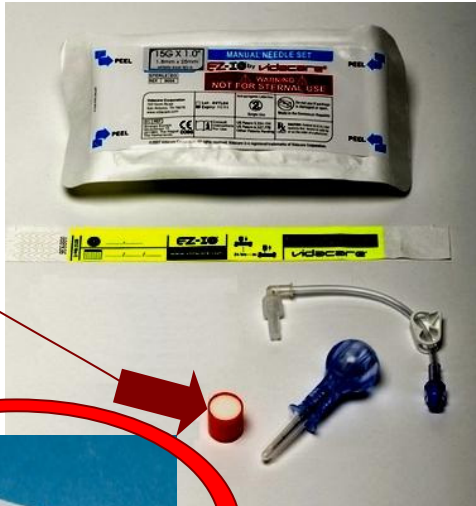


**NORTHWEST  
COMMUNITY  
EMERGENCY  
MEDICAL  
SERVICES  
SYSTEM**

# EZ-IO tips

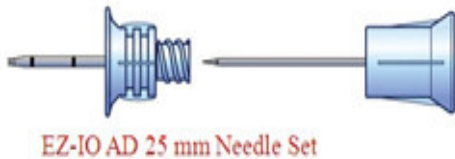
## New PACKAGE:

- do not open until use
- plastic container removed
- sharps cushion included



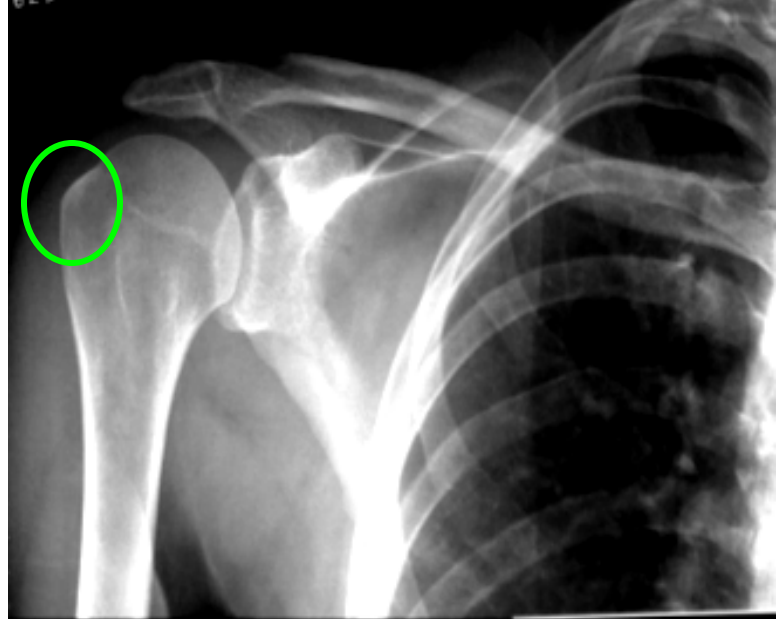
## Each amb should have 3 EZ-IO NEEDLES:

- 1 pink (15 mm)
- 1 blue (25 mm)
- 1 yellow (45 mm)



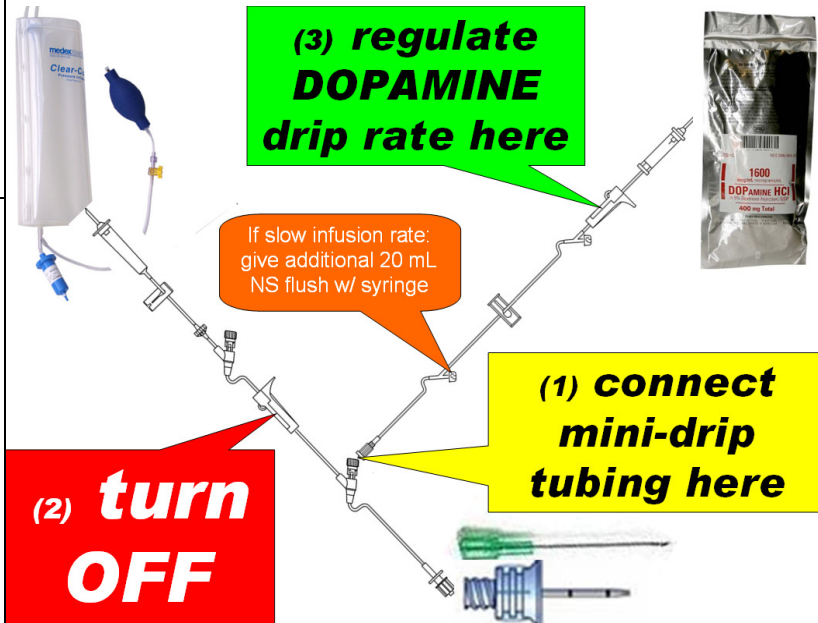
## HUMERAL insertion:

- use 45 mm needle in adults
- immobilize arm to prevent dislodgement



## Administering DOPAMINE via IO:

- connect dopamine bag to minidrip IV tubing
- connect minidrip tubing to IV port nearest pt
- turn off main IV line
- regulate dopamine drip rate w/ rollerclamp



## Any time IO FLOW rate is SLOW/decreased:

- give additional 10-20 mL NS flush w/ syringe